



XYLOWATT sa



Biomass to Energy

REFERENCES

- NOTAR[®] v.3 : 2018 – Mont-Godinne
- NOTAR[®] v.2 : 2015 – Saint Gobain
- NOTAR[®] v.2 : 2009 – Tournai
- Test Gasifier Plant : 2010 – Louvain-la-Neuve

REFERENCES – OVERVIEW



Louvain-la-Neuve



Mont-Godinne



Tournai

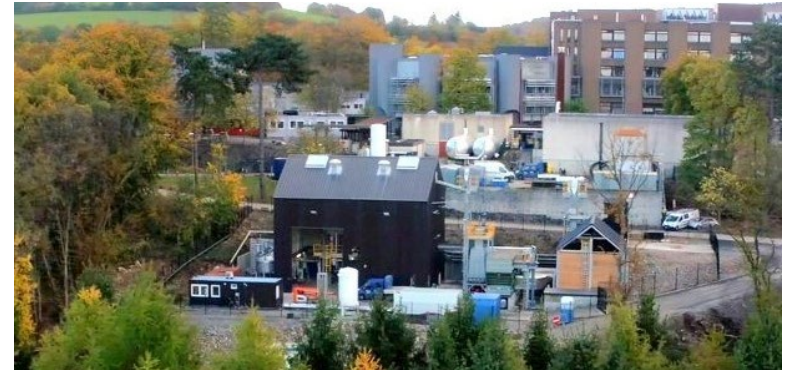


Saint Gobain

BELGIUM – Mont-Godinne

First Belgian Hospital with Trigeneration renewable energy

| Project Key Data | |
|------------------|---|
| Location | Mont-Godinne Hospital, Belgium |
| Owner | Special Purpose Vehicule (MGGE) |
| Application | Combined Heat & Power (Jenbacher J320S) for hospital energy consumption |
| Capacity | $750\text{kW}_e + 1200\text{kW}_{\text{heat}} + 400\text{kW}_{\text{Cold}}$ |
| Technology | NOTAR v.3 |
| Feedstock | Natural and recycled woodchips |
| Commissioning | Q1-2018 |



BELGIUM – Louvain-la-Neuve

TGP (Test gasifier Pilot)- Laboratory tool - R&D Center

| Project Key Data | |
|---------------------------------|--|
| Location | University Catholic of Louvain-La-Neuve (UCL), Institute of Mechanics, Materials and Civil Engineering, Belgium |
| Evaluation/R&D scope | <ul style="list-style-type: none">• Optimizing operational parameters to various types of woodchips and biomasses• Industrial benchmark for commercial purposes |
| Capacity | 150 kW _{th} syngas power LHV |
| Technology | NOTAR |
| Feedstock | Various |
| Commissioning | Start operation in 2010 |



Optimising parameters

On site analysis

Several feedstocks

BELGIUM – Tournai

Swimming-pool heated by wood energy

| Project Key Data | |
|------------------|--|
| Location | Tournai, Belgium |
| Owner | Tournai City |
| Application | Combined Heat & Power (MTU G12) for swimming-pool energy consumption |
| Capacity | 260kW _e + 475kW _{heat} |
| Technology | NOTAR v.2 |
| Feedstock | Natural woodchips |
| Commissioning | Q4-2009 |



FRANCE – Glass bottle plant

Industrial kiln using renewable wood syngas

| Project Key Data | |
|----------------------|---|
| Location | Saint Gobain - Champagne Area (France) |
| Owner | Glass bottles manufacturer |
| Application | Direct use of syngas for fossil fuel substitution in industrial process |
| Capacity | 950 kW _{th} syngas power |
| Technology | NOTAR v.2 |
| Feedstock | Woodchips from vineyards pruning branches and obsolete vine stocks |
| Commissioning | Q1-2015 |



ALL REFERENCES



| Project Key Data | |
|----------------------|---|
| Location | Mont-Godinne Hospital, Belgium |
| Owner | Special Purpose Vehicule (MGGE) |
| Application | Combined Heat & Power (Jenbacher J320S) for hospital energy consumption |
| Capacity | 750kW _e + 1200kW _{heat} + 400kW _{Cold} |
| Technology | NOTAR v.3 |
| Feedstock | Natural and recycled woodchips |
| Commissioning | Q1-2018 |

| Project Key Data | |
|---------------------------------|---|
| Location | University Catholic of Louvain-La-Neuve (UCL), Institute of Mechanics, Materials and Civil Engineering, Belgium |
| Evaluation/R&D scope | <ul style="list-style-type: none"> Optimizing operational parameters to various types of woodchips and biomasses Industrial benchmark for commercial purposes |
| Capacity | 150 kW _{th} syngas power LHV |
| Technology | NOTAR |
| Feedstock | Various |
| Commissioning | Start operation in 2010 |



| Project Key Data | |
|----------------------|---|
| Location | Champagne Area (France) |
| Owner | Glass bottles manufacturer |
| Application | Direct use of syngas for fossil fuel substitution in industrial process |
| Capacity | 950 kW _{th} syngas power |
| Technology | NOTAR v.2 |
| Feedstock | Woodchips from vineyards pruning branches and obsolete vine stocks |
| Commissioning | Q1-2015 |

| Project Key Data | |
|----------------------|--|
| Location | Tournai, Belgium |
| Owner | Tournai City |
| Application | Combined Heat & Power (MTU G12) for swimming-pool energy consumption |
| Capacity | 260kW _e + 475kW _{heat} |
| Technology | NOTAR v.2 |
| Feedstock | Natural woodchips |
| Commissioning | Q4-2009 |





REFERENCES - BELGIUM



xW – Tournai

Rue Jean-Baptiste Moens, 6
7500 TOURNAI



xW - Mont-Godinne

Avenue du Docteur Gaston Thérasse, 1
5530 YVOIR



TGP - LLN

University UCL
1348 LOUVAIN LA NEUVE



xW – Office

Avenue Jean Monnet, 1
1348 LOUVAIN-LA-NEUVE

Transfert time

Tournai to Mont-Godinne : 1h15
Mont-Godinne to Brussels Airport: 1h05
xW Office to Tournai : 1h15
xW Office to Mont-Godinne : 0h45
xW Office to Brussels Airport : 0h20



XYLOWATT s.a.

Avenue Jean Monnet, 1
1348 Louvain-la-Neuve
Belgium

info@xylowatt.com

www.xylowatt.com